

TCAAP Groundwater Flow and Transport Model Intro

March 15, 2022

RAB Meeting

USGS Upper Midwest

Groundwater Modeling Team

Contact: Meg Haserodt, mhaserodt@usgs.gov





Who We Are

- Federal science agency that collects, monitors, analyzes, and provides scientific understanding of natural resource conditions, issues, and problems in an unbiased manner.
- The groundwater modeling team for this project is in MN, WI, and MI with combined decades of experience modeling groundwater at a range of scales.
- Our work is published in publicly available data releases + reports

Why make a model of TCAAP?



ASSIMILATE THE VAST AMOUNT OF DATA THAT HAVE BEEN COLLECTED AT THE SITE



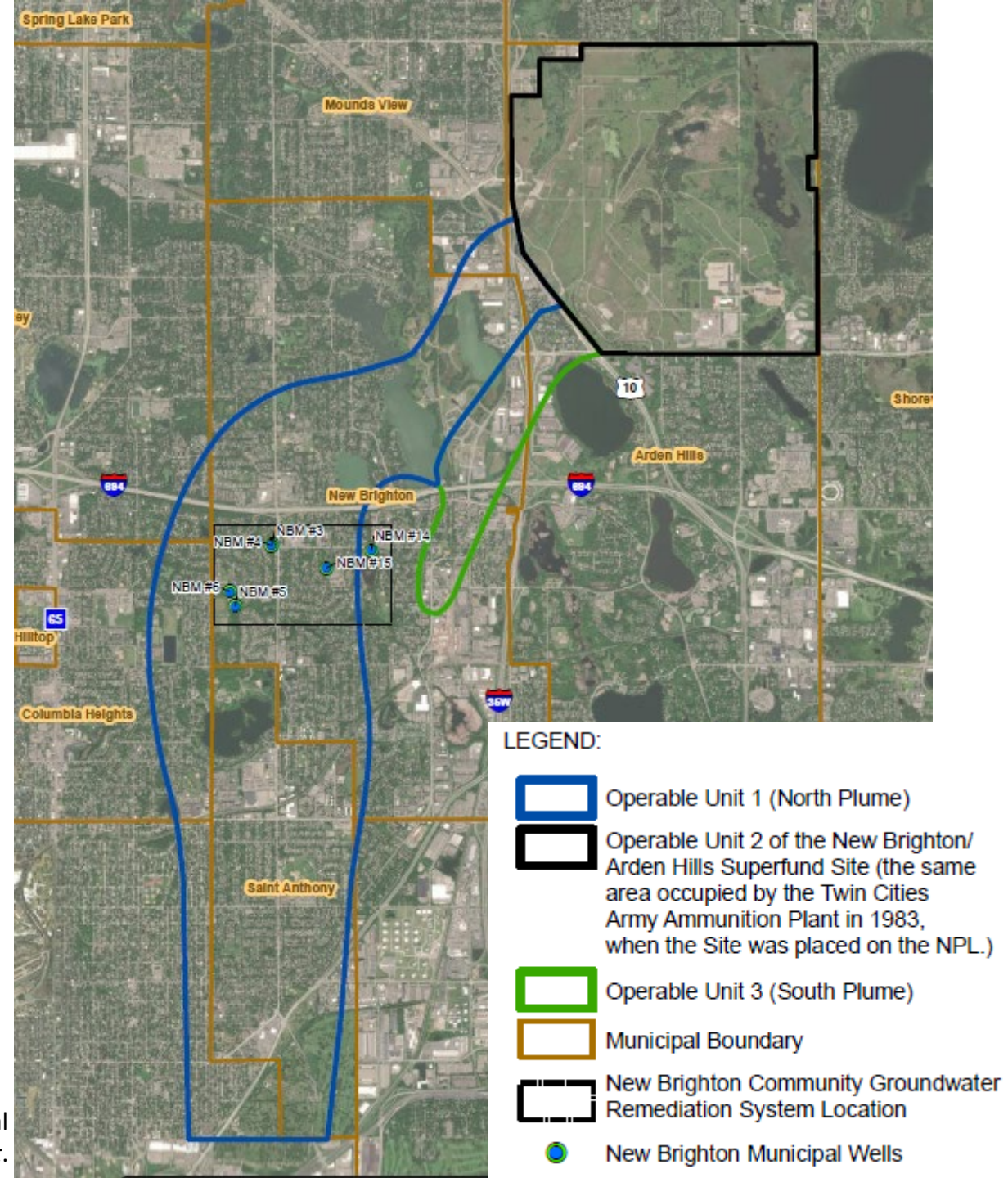
SIMULATE THE EXPECTED PLUME CAPTURE FROM THE NEW SOURCE GROUNDWATER RECOVERY SYSTEM (SGRS)



UNDERSTAND THE PLUME BEHAVIOR OVER TIME + ANSWER QUESTIONS ABOUT THE GROUNDWATER SYSTEM IN THIS AREA

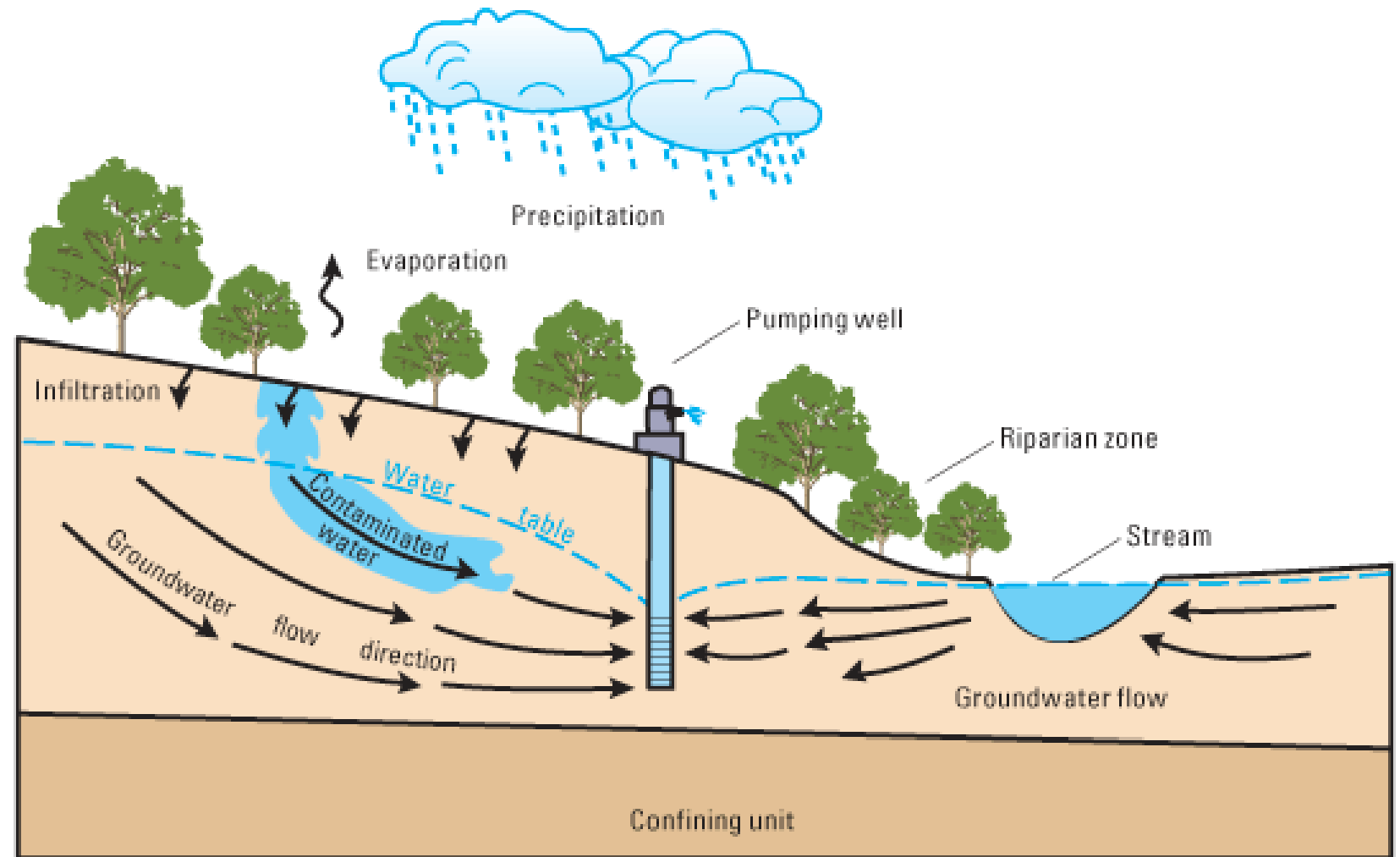
Model Focus

- OU1, OU2, & OU3 groundwater plumes
- Contaminants
 - 1,4-dioxane
 - Trichloroethene (TCE)

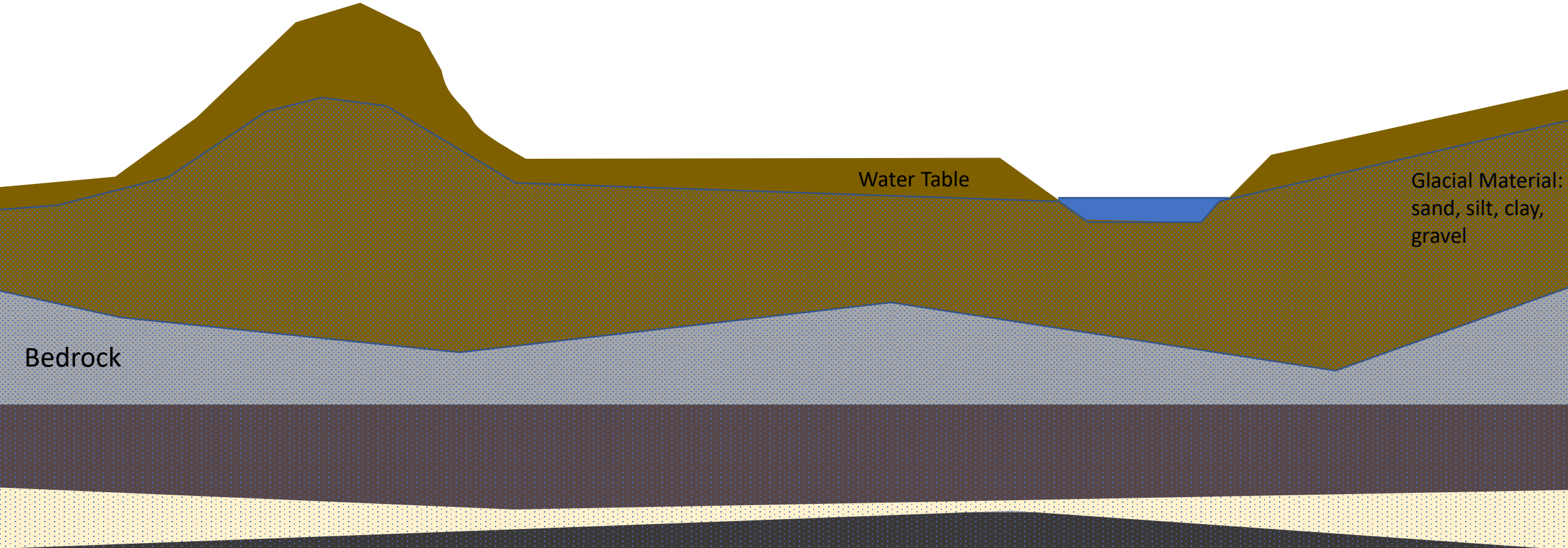


What is a groundwater flow + transport model?

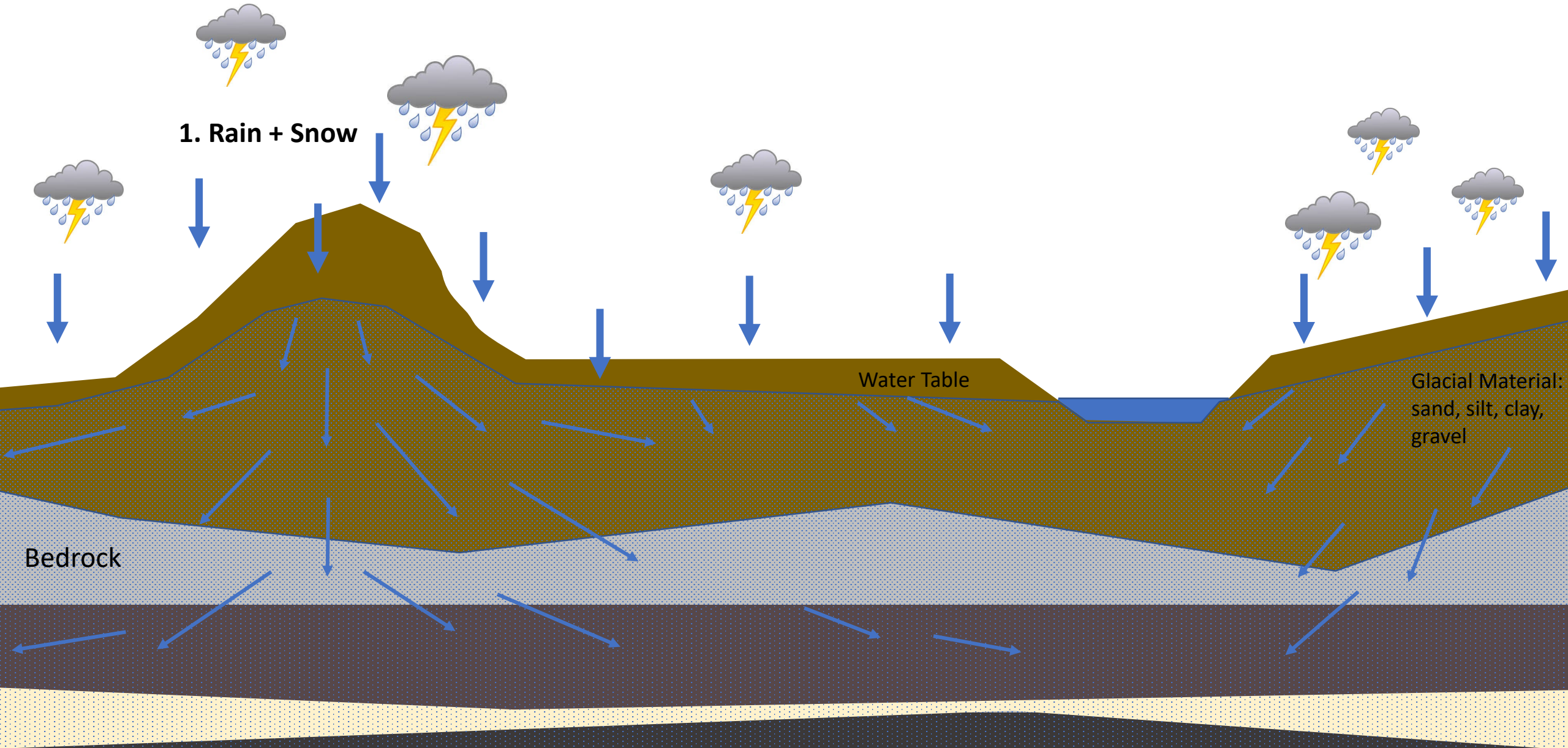
- Groundwater flow: the path water takes from where it enters the ground to where it exits the system.
- Groundwater transport: how a chemical moves with groundwater.



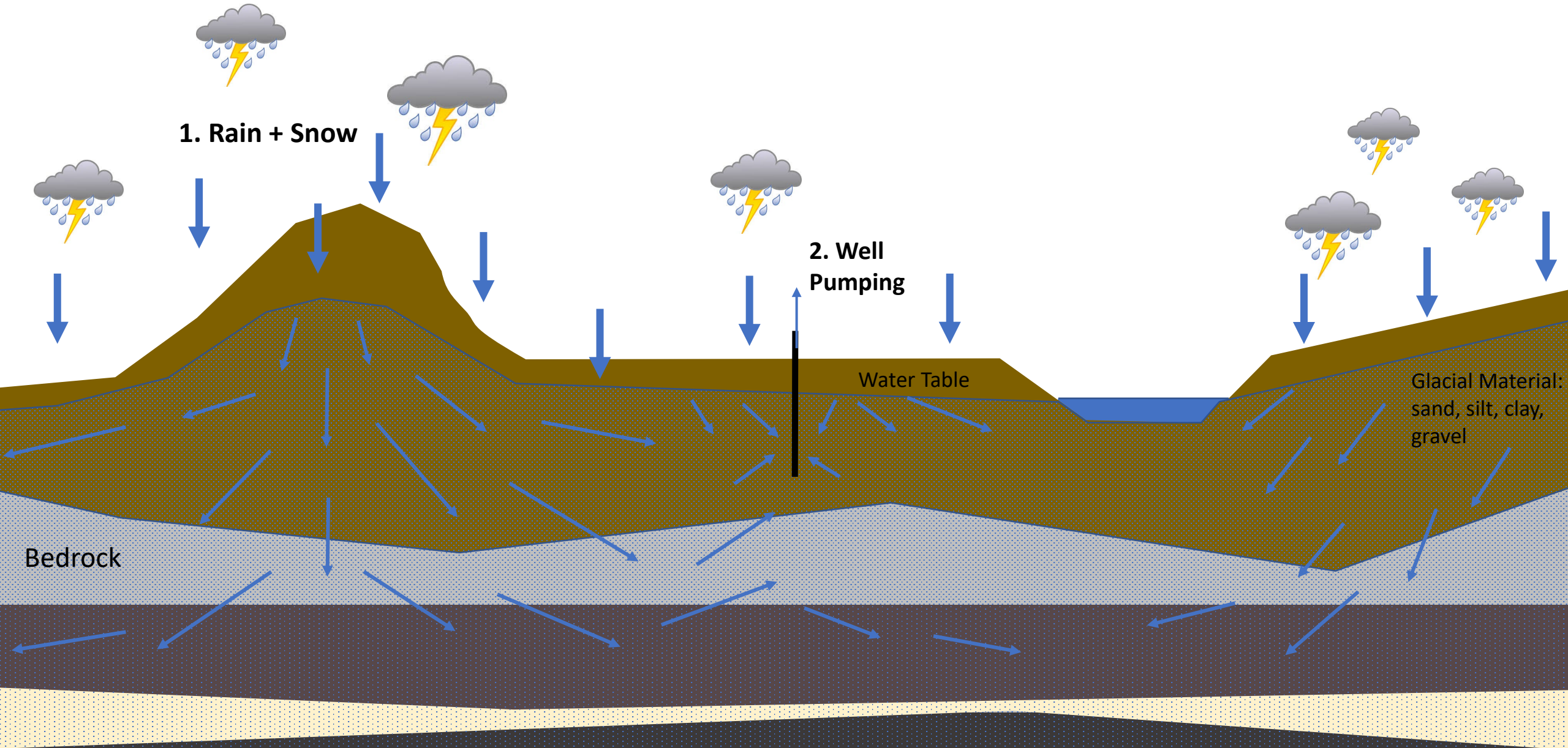
Groundwater Flow Schematic



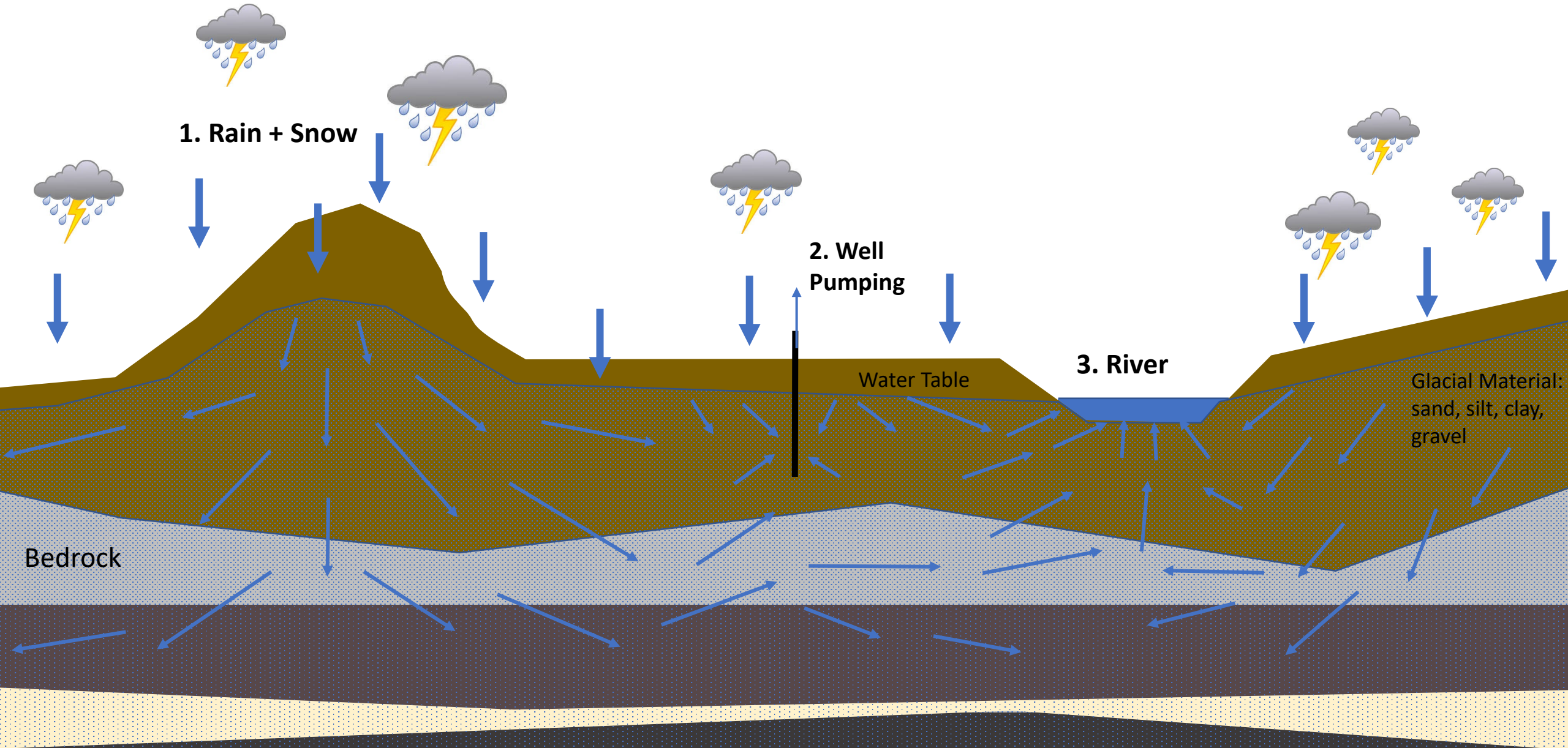
Groundwater Flow Schematic



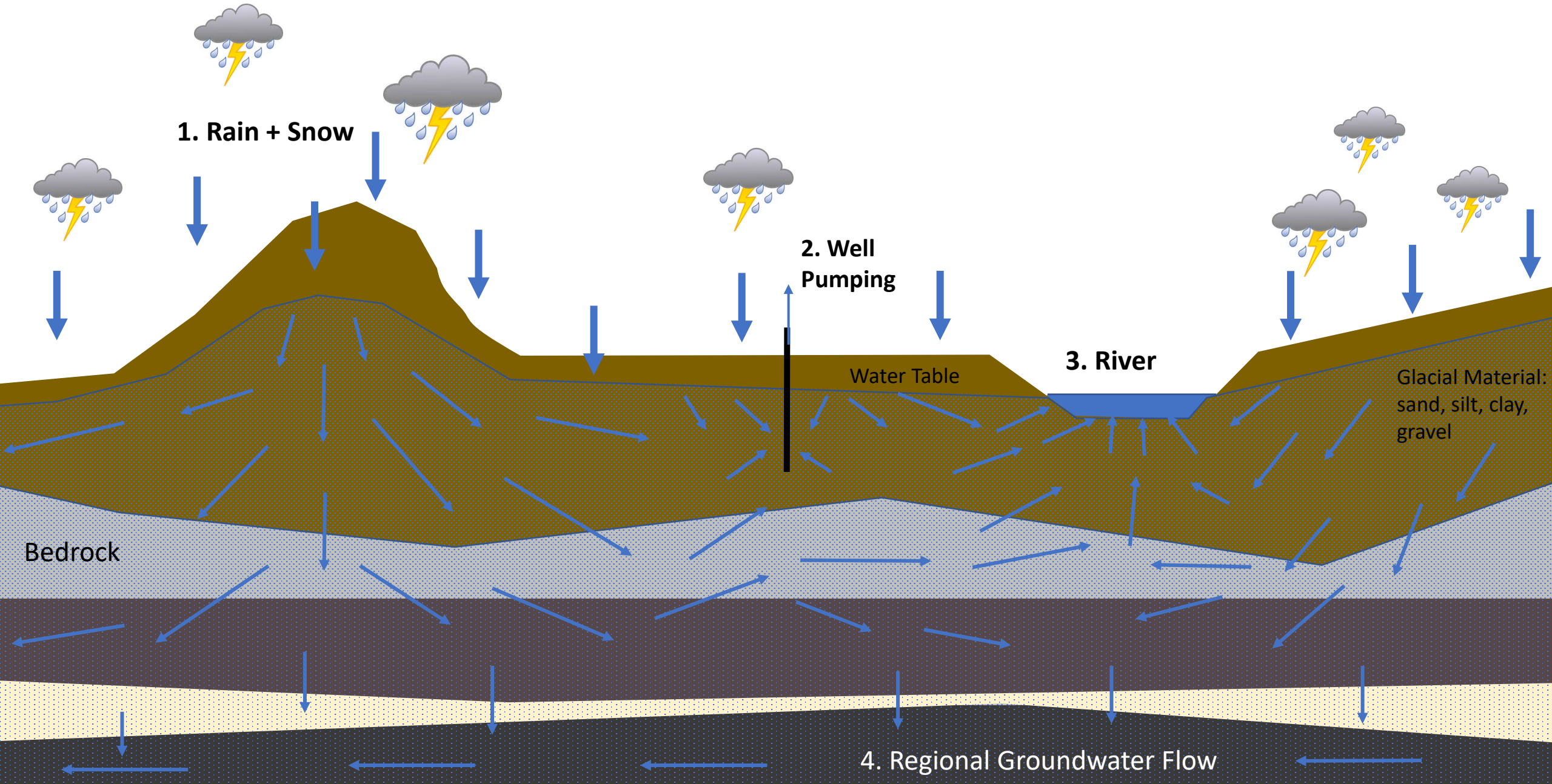
Groundwater Flow Schematic



Groundwater Flow Schematic

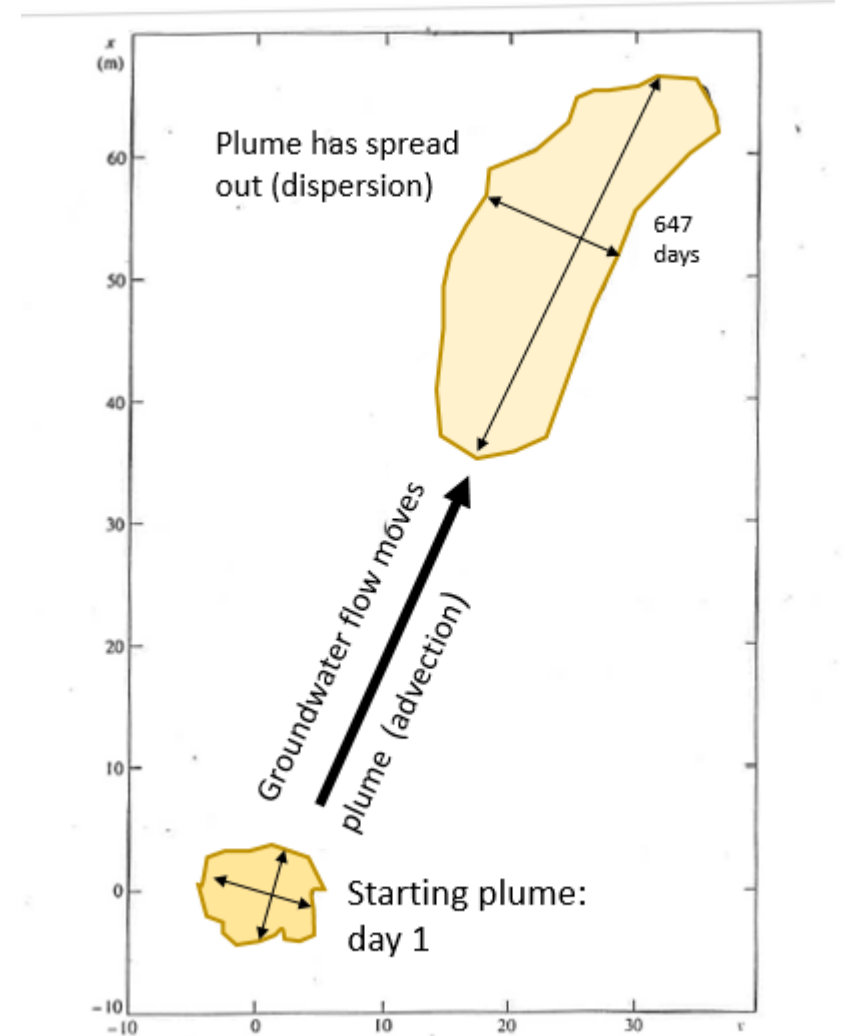


Groundwater Flow Schematic



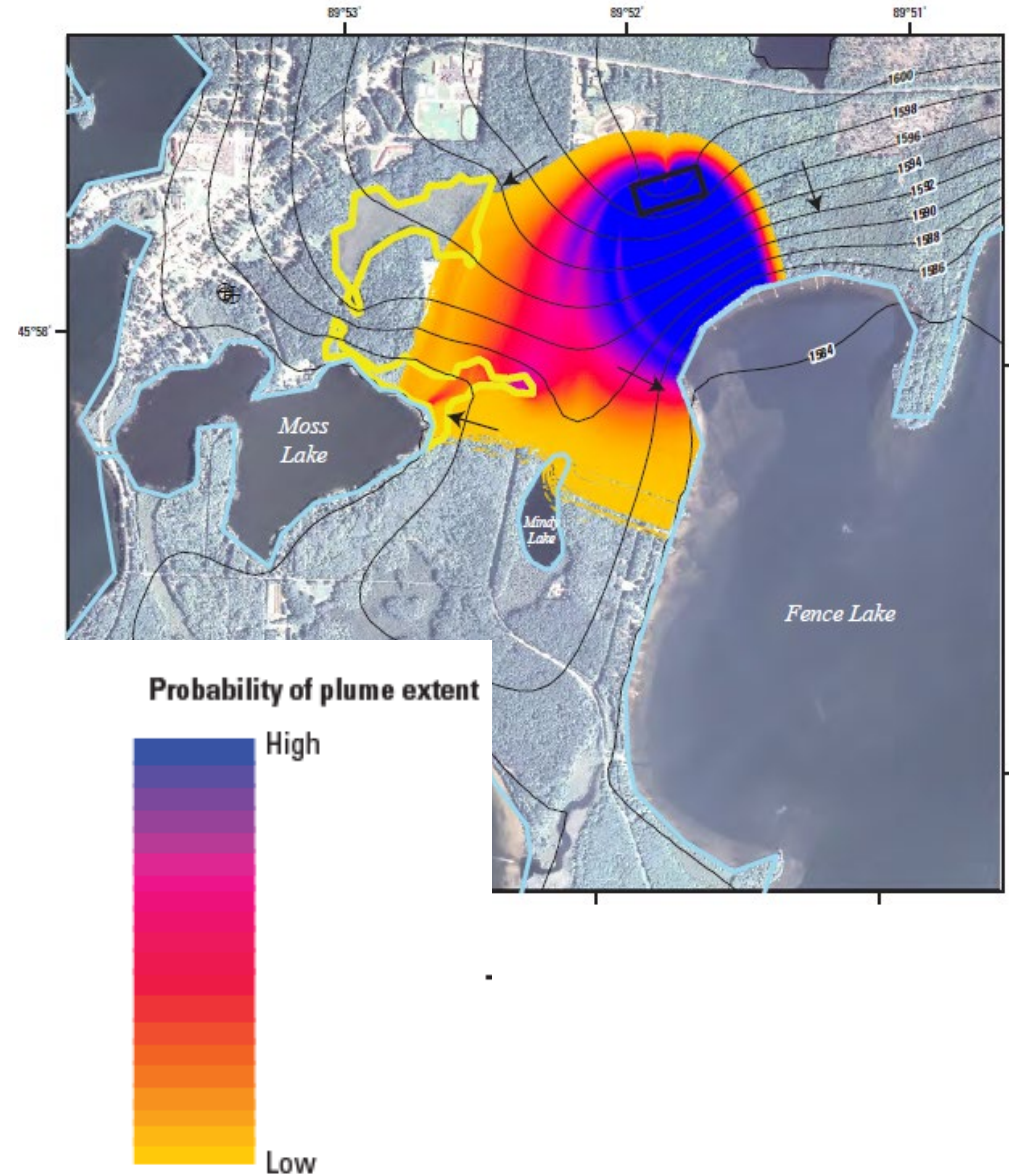
Contaminant Transport Modeling

- Processes that impact transport
 - Groundwater flow
 - Sorption (attachment) of contaminants to soil and rock particles
 - Degradation of contaminants
 - Biological reactions involving contaminant
 - Local-scale variability in subsurface
 - Contaminant density (sometimes)



Uncertainty

- Model properties that effect both flow and transport are often not well known (uncertain)
- Our office specializes in understanding model results in the context of this uncertainty
 - Example on right: Monte Carlo approach using 100s of model runs across a range of properties
 - Get model result + an associated probability



Next Steps

1. Build the groundwater flow model (this year)

**2. Calibrate the model + add transport
(next year)**

**3. Run pumping
scenarios**

USGS Upper Midwest Groundwater
Modeling Team

Contact: Meg Haserodt,
mhaserodt@usgs.gov